

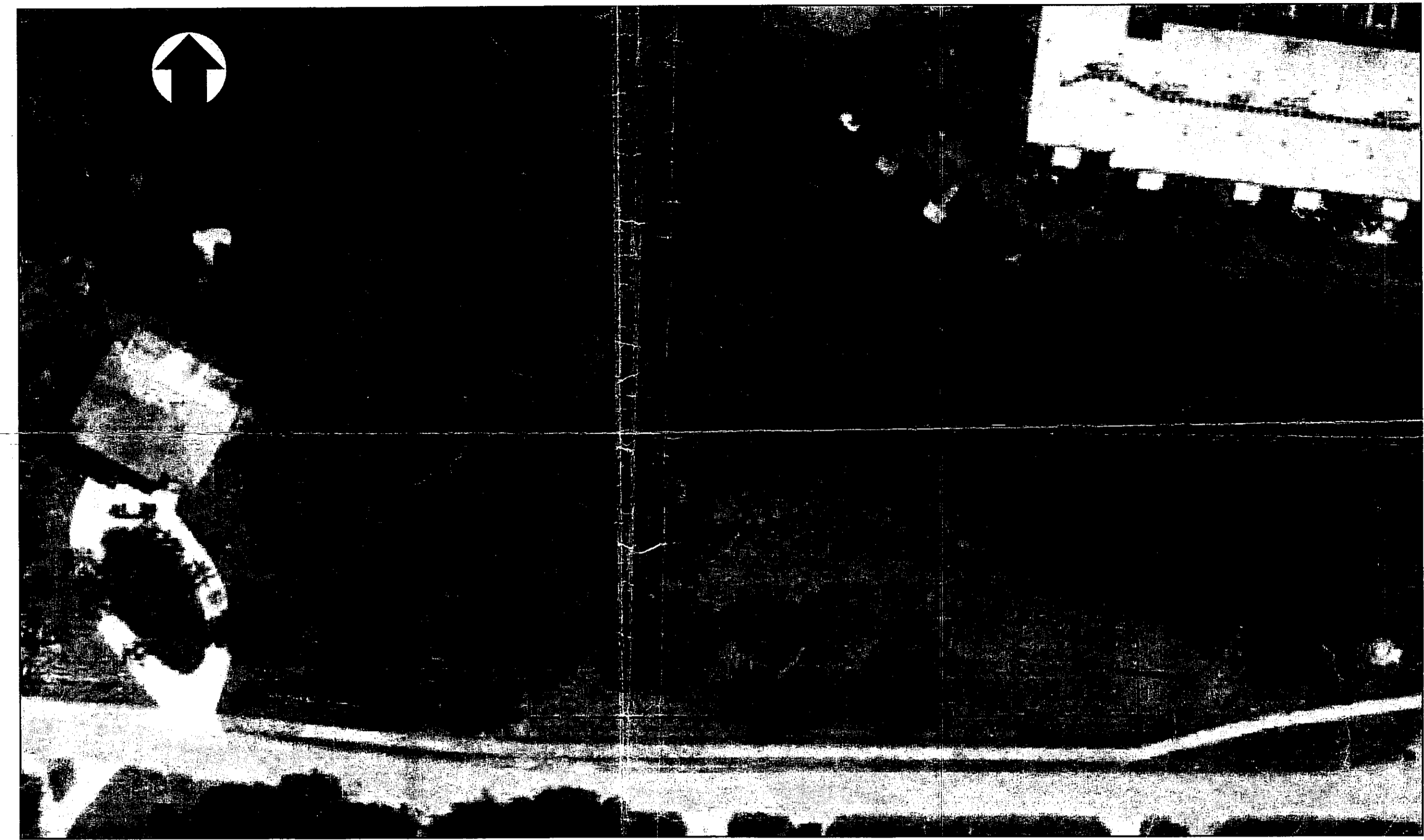
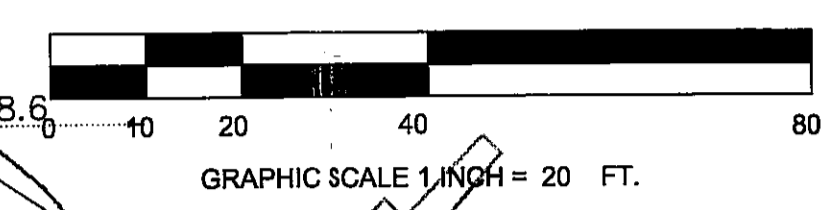
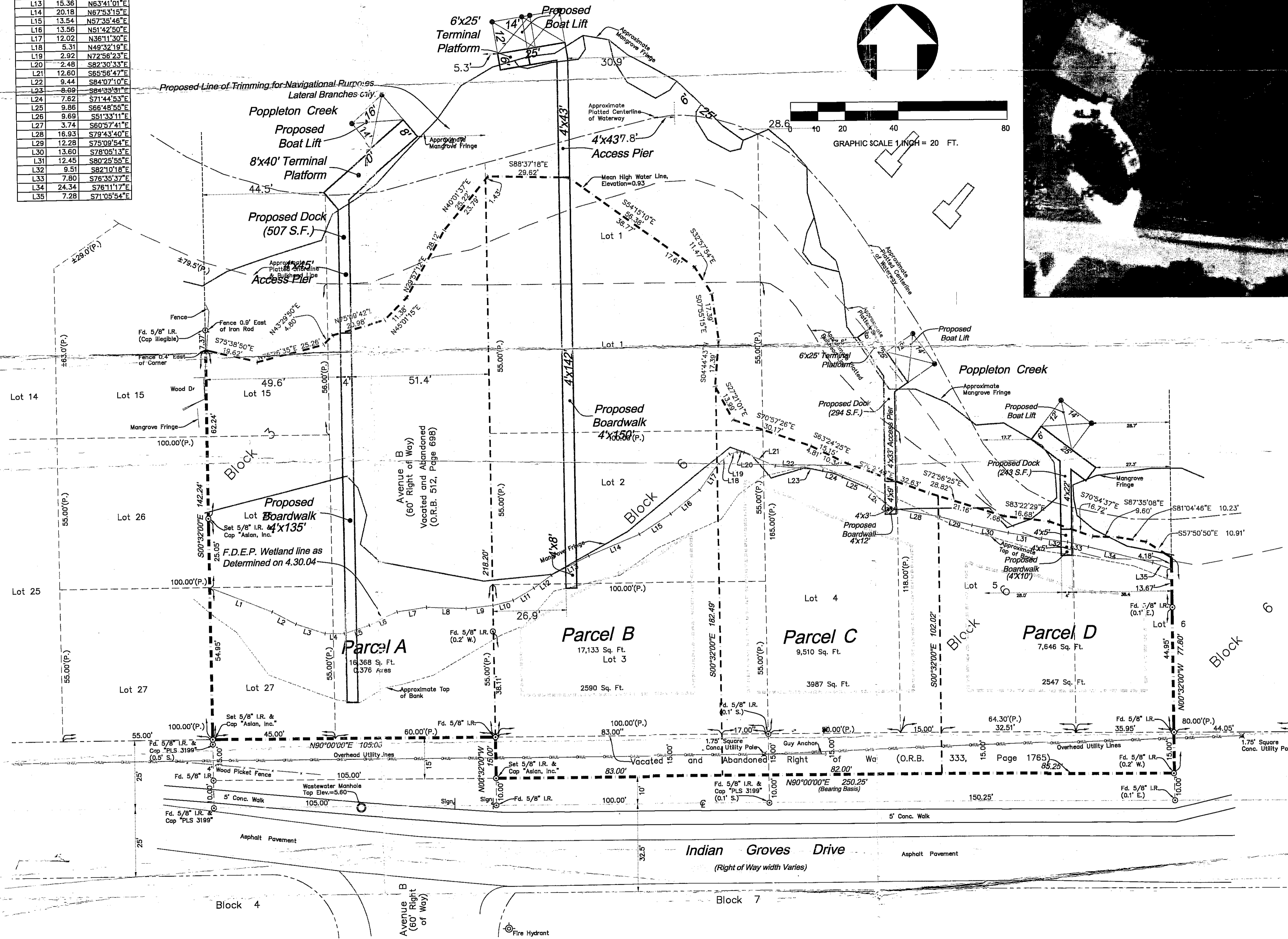
Specific Purpose Survey

Line	Length	Direction
L1	24.51	S66°44'08"E
L2	9.80	S62°09'22"E
L3	11.24	S71°35'54"E
L4	7.03	S85°12'17"E
L5	9.73	N72°29'07"E
L6	12.40	N67°21'06"E
L7	10.89	N81°43'46"E
L8	14.51	S87°40'48"E
L9	9.53	N84°01'11"E
L10	7.50	N77°01'19"E
L11	8.78	N60°20'59"E
L12	7.87	N54°42'52"E
L13	15.36	N63°41'01"E
L14	20.18	N67°53'15"E
L15	13.54	N57°35'48"E
L16	13.56	N51°42'50"E
L17	12.02	N36°11'30"E
L18	5.31	N49°32'19"E
L19	2.92	N72°56'23"E
L20	2.48	S82°30'33"E
L21	12.60	S85°58'47"E
L22	8.44	S84°07'10"E
L23	8.98	S84°33'51"E
L24	7.62	S71°44'53"E
L25	9.86	S66°48'55"E
L26	9.69	S51°33'11"E
L27	3.74	S60°57'41"E
L28	16.93	S79°43'40"E
L29	12.28	S73°09'54"E
L30	13.60	S78°05'13"E
L31	12.45	S80°25'55"E
L32	9.51	S82°10'18"E
L33	7.80	S76°35'37"E
L34	24.34	S76°11'17"E
L35	7.28	S71°05'54"E

The East 45 feet of Lots 15, 26, and 27, Block 3 and Lots 1 through 5, Block 6 and the Westerly 35.95 feet of Lot 6, Block 6, INDIAN GROVES SUBDIVISION, Plat Book 1, page 37, Public Records of Martin County, Florida.

TOGETHER WITH that vacated and abandoned right-of-way as described in City of Stuart Ordinance No. 497, Official Records Book 333, page 1765, Public Records of Martin County, Florida, said right-of-way being 15.00 feet in width and lying South of and abutting the South line of Lots 3, 4, 5 and the Westerly 35.95 feet of Lot 6, Block 6, INDIAN GROVES SUBDIVISION, Plat Book 1, page 37, Public Records of Martin County, Florida.

TOGETHER WITH all of "Avenue B", a 60.00 foot right-of-way lying between Block 3 and 6, as vacated and abandoned in City of Stuart Ordinance No. 487, Official Records Book 512, page 698, Public Records of Martin County, Florida, INDIAN GROVES SUBDIVISION, Plat Book 1, page 37, Public Records of Martin County, Florida.



The Survey Map is not full and complete without the attached Survey Report. See attached Survey Report for the Description, Notes and Certification.

Prepared For:
South Beach Cottages and Lots, Inc.
 Indian Groves Subdivision
 City of Stuart, Martin County
 Florida

ALAN, inc.
 CONSULTANTS • PLANNERS • SURVEYORS
 MARINE ENVIRONMENTAL PERMITTING
 2440 S.E. Federal Highway - Suite 700
 Stuart, FL 34994 (772) 288-4880 Fax 288-0128

VERIFY SCALE
 Bar is equal to One Inch on Original Drawing
 0 ——— 1
 Adjust all Scaled Dimensions Accordingly

Sheet Title:			Wetland Line		Sheet Number:	
Date:	By:	Revision Description:	Scale: 1" = 20'	Date: 05.19.2004	1 of 1	
			Drawn By: codd vi	Field Book:	CADD File: pop-crk_CP_JWA1.dwg	
			Job No.: 1047.31.04			